

INSTALLATION GUIDE

mBox Guardian



Indoor monitor

MMG - 171

meersens

www.meersens.com

Contenu du kit :

-  Air quality monitor: CO₂, PM2.5, LVOC, temperature, humidity, pressure, light, noise
-  12V power supply from 220V socket

Other equipment needed for installation:

- A drill
- A level
- Two 3mm diameter screws, round or flat type, with a screw head diameter between 5 and 7 mm
- Two dowels adapted to the above screws and the material in which they will be fixed
- On the wall, an electrical outlet with or without a ground connection near where the mBox Guardian will be installed (<1m)

Positioning the station:

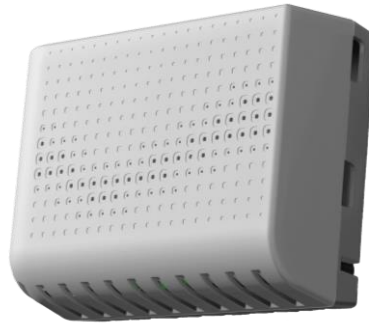
Make sure to position the mBox Guardian:

- On one of the walls of the room to be instrumented, taking into account the table provided indicating in which rooms to place the various mBox Guardian.
- At a height between 1 and 2 m corresponding as much as possible to the height, of the respiratory tract of the people occupying the premises (children, adults, seated people mostly...).
- Out of draughty areas (air intake or exhaust, door, window).
- Away from specific and localized sources of pollution (kitchen, garbage can, changing area, perfume diffuser...).
- Away from heat sources (radiator, direct sunlight).
- At more than 1m from the corners of the room

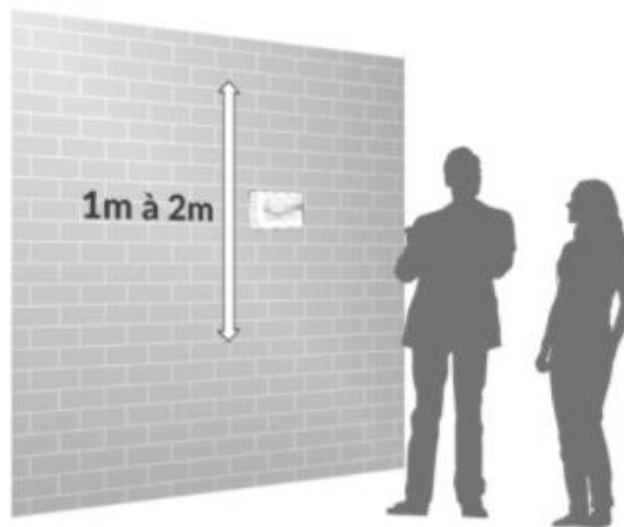
Product:

[Introduction](#)

The **mBox Guardian MMG-171** is an intelligent global air index sensor. It can monitor volatile organic compounds (VOCs), humidity, pressure, carbon dioxide (CO₂) and temperature - essentially covering a variety of indicators reflecting air quality.



[Wall installation](#)



You will find on page 5, an appendix with a plan of the station at scale 1 allowing a transfer of the drilling dimensions directly on the wall.

Please note: if you print this document, the printing parameters may change the original size of the plans below. If you wish to use this document as a template, the dimensions must be checked before use.



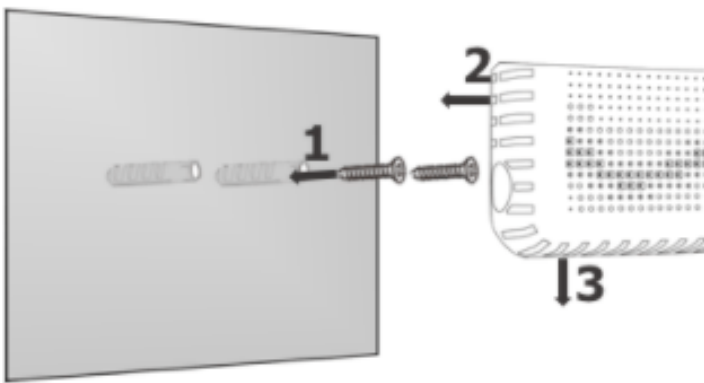
The mBox Guardian is attached to the wall using two screws that fit into the holes on the back of the box. This allows installation without having to open the box.

We recommend the use of screws with a diameter of 3 mm, either round or flat, and with a screw head diameter of between 5 and 7 mm.

WARNING: In order not to damage the motherboard, the top of the screw heads should not be more than 7 mm from the wall (ideal distance between the wall and the base of the screw head: 4 mm).

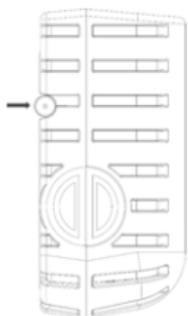
The distance between the two holes is 81mm.

To attach mBox Guardian:



- Place the drilling template level and mark the location of the screws.
- Drill the wall with a drill bit adapted to the support and the plugs.
- Place the wall plugs and screws so that the base of the screw head is 4mm from the wall.
- Install the mBox Guardian by inserting the screw heads into the holes provided and sliding the unit down to the end of the slide.

Finalizing the installation



To complete the installation:

- Connect the mBox Guardian to the 12V power cable provided;
- Connect the power supply to a wall outlet (type C, E or F).

APPENDIX

Appendix 1: Information



Certification

The mBox Guardia complies with the following European standards:
EN 61326-1 concerning the EMC of electronic devices

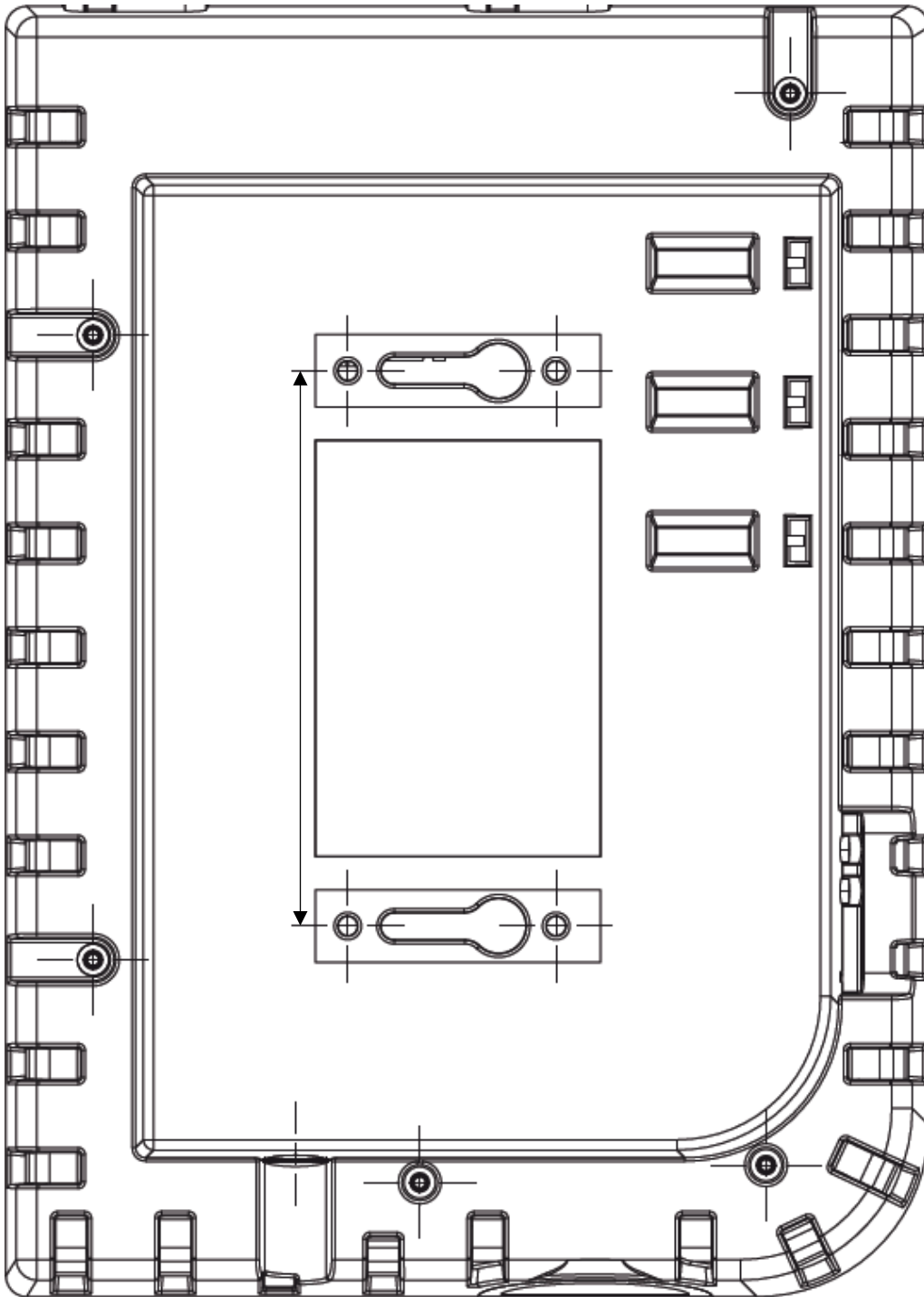
Important notice:

- No part of this manual may be reproduced without permission from the manufacturer.
- All brand and product names or registered trademarks are the property of their respective owners.
- Any use contrary to the instructions in this manual will result in the loss of the contractual guarantee defined in our sales conditions.
- The data and characteristics indicated in this manual are not binding on the manufacturer, who reserves the right to make any changes without obligation to give prior notice or to replace.
- The manufacturer cannot be held responsible for any incidental or consequential damages in connection with any deletion, error or omission in this man



Appendix 2 : Installation template

Information: This template is a symmetry of the back side of the mBox Guardian and is intended to be applied to the wall to mark the mounting holes.



meersens

www.meersens.com

#HealthGuardian

Meersens est une société d'intelligence artificielle DeepTech spécialisée dans l'agrégation et le traitement des données d'exposome afin d'aider et d'accompagner les collectivités, les entreprises engagées dans des démarches RSE et les professionnels de santé dans la prise en compte de l'impact de l'environnement sur l'état de santé des individus. A travers sa solution, Meersens agit pour la Santé Publique et s'inscrit dans un processus vertueux de mise en œuvre de conseils, d'actions de prévention et d'aide à la décision en étroite collaboration avec les spécialistes des domaines concernés.

Sur la base de



OBJECTIFS
DE DÉVELOPPEMENT
DURABLE



Partenaires



bpi**france**

La Région
Auvergne-Rhône-Alpes



GRANDLYON
le métropole

DIGITAL
LEAGUE



ars
Agence Régionale de Santé

LIRIS

LYONBIOPOLE

HAS
Haute Autorité de Santé

anses



Découvrez l'application
Meersens

L'application gardienne de
votre santé pour une vie plus
saine.

**Demandez votre démonstration et
posez-nous toutes vos questions !**

SAS Meersens
8 avenue Maréchal Foch, 69006 Lyon
RCS Lyon : 932 811 392 00014

info@meersens.com
www.meersens.com

